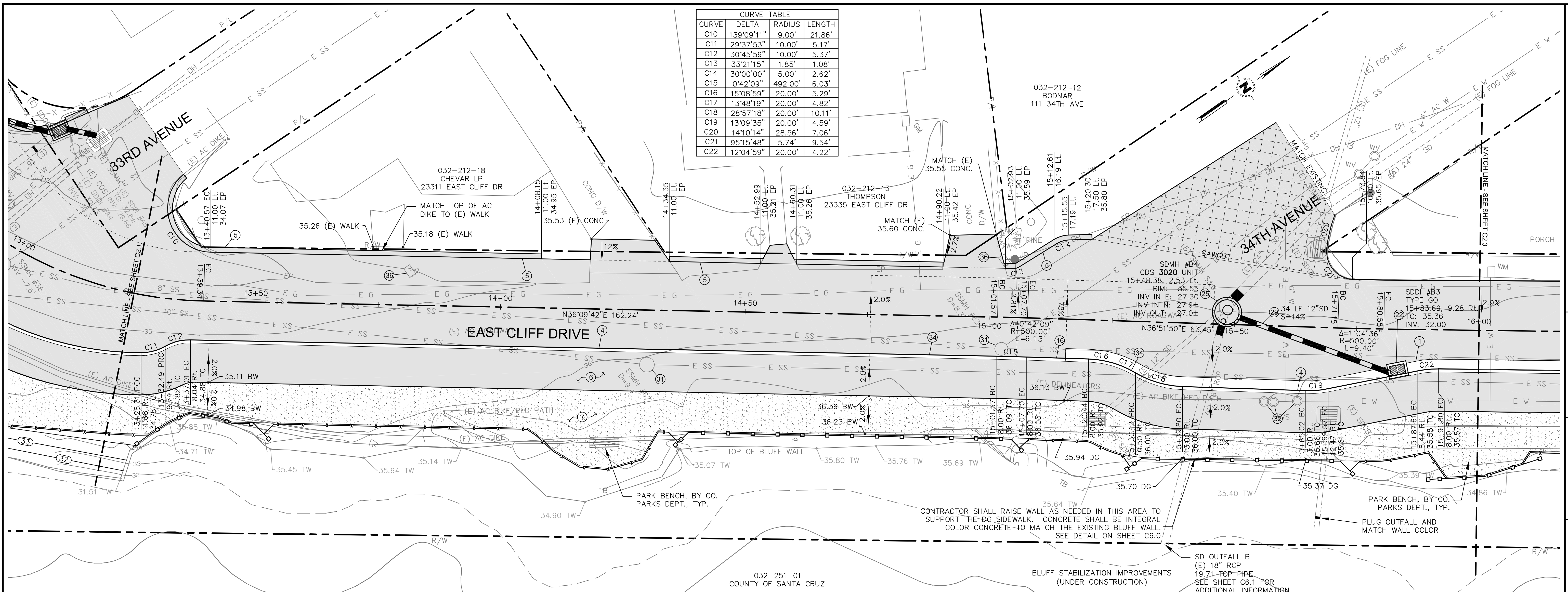
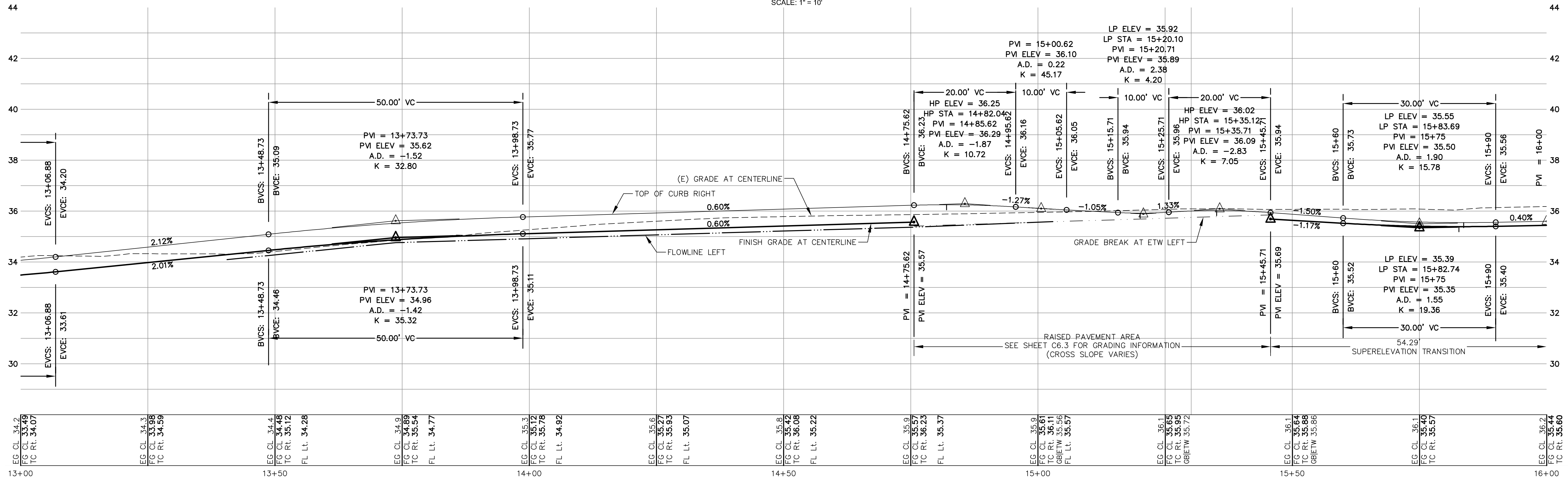


CURVE	DELTA	RADIUS	LENGTH
C10	139°09'11"	9.00'	21.86'
C11	29°37'53"	10.00'	5.17'
C12	30°45'59"	10.00'	5.37'
C13	33°21'15"	1.85'	1.08'
C14	30°00'00"	5.00'	2.62'
C15	0°42'09"	492.00'	6.03'
C16	15°08'59"	20.00'	5.29'
C17	13°48'19"	20.00'	4.82'
C18	28°57'18"	20.00'	10.11'
C19	13°09'35"	20.00'	4.59'
C20	14°10'14"	28.56'	7.06'
C21	95°15'48"	5.74'	9.54'
C22	12°04'59"	20.00'	4.22'



EAST CLIFF DRIVE PARKWAY PLAN STA 13+25 - 16+00

SCALE: 1" = 10'



EAST CLIFF DRIVE PARKWAY PROFILE STA 13+25 - 16+00

SCALE: 1" = 10' HORIZONTAL, 1" = 2' VERTICAL

WHITSON ENGINEERS
 2425 Porter Street - Suite 2 - Soquel, CA 95073
 831 464-9363 • Fax 831 464-2316
 CIVIL ENGINEERING • LAND SURVEYING • PROJECT MANAGEMENT



County of Santa Cruz
 Department of Public Works
 701 Ocean St. Rm 410
 Santa Cruz, CA 95060-4000
 Phone: (831) 452-2180
 Fax: (831) 454-2265

GRADING AND DRAINAGE
 PLAN AND PROFILE
 STA 13+25 - STA 16+00
 EAST CLIFF DRIVE PARKWAY PROJECT
 32nd AVENUE TO 41st AVENUE
 County of Santa Cruz
 California

REV	BY	DATE	DESCRIPTION
1		03/22/10	75% SUBMITTAL
2		10/08/10	95% SUBMITTAL
3		07/12/11	BID SET

DATE: SEPTEMBER 2010
 SCALE: AS NOTED
 DESIGNED BY: MS/RT
 DRAFTED BY: RT/SG
 CHECKED BY: KW
 JOB NO.: 2280.01
 FILE: Civil Plan.dwg

C2.2